

Bailey 29



SUITABLE FOR 12.5m WIDE BLOCKS

The Bailey 29 has been designed to suit 12.5m wide blocks.

This home will be the complete package featuring our 'House to home' inclusions. Quality fixtures & fittings throughout with all the final touches that make a house a home. All you will need to do is move in! We offer FIXED PRICE tenders that include all site costs.

The layout of the Bailey 29 brings together space, functionality and style. The lower level of the Bailey 29 is an entertainers dream with a large open gourmet kitchen and living area that flows freely onto a large undercover alfresco. The lower level also features a separate media room and study. Upstairs offers the family a private & calming haven to retreat to with all 4 bedrooms and the main bathroom situated on the first floor.

- **4 bedrooms with BIR**
- **2 bathrooms with floor to ceiling tiling**
- **Open plan living**
- **Gourmet kitchen with stone benchtops & WIP**
- **Large alfresco area**
- **House to home inclusions**

Get in touch

Aaron Bell | aaron@samaro.com.au | 0431 168 847 | 1300 735 746



Scan QR Code

Follow us on Facebook



Scan QR Code

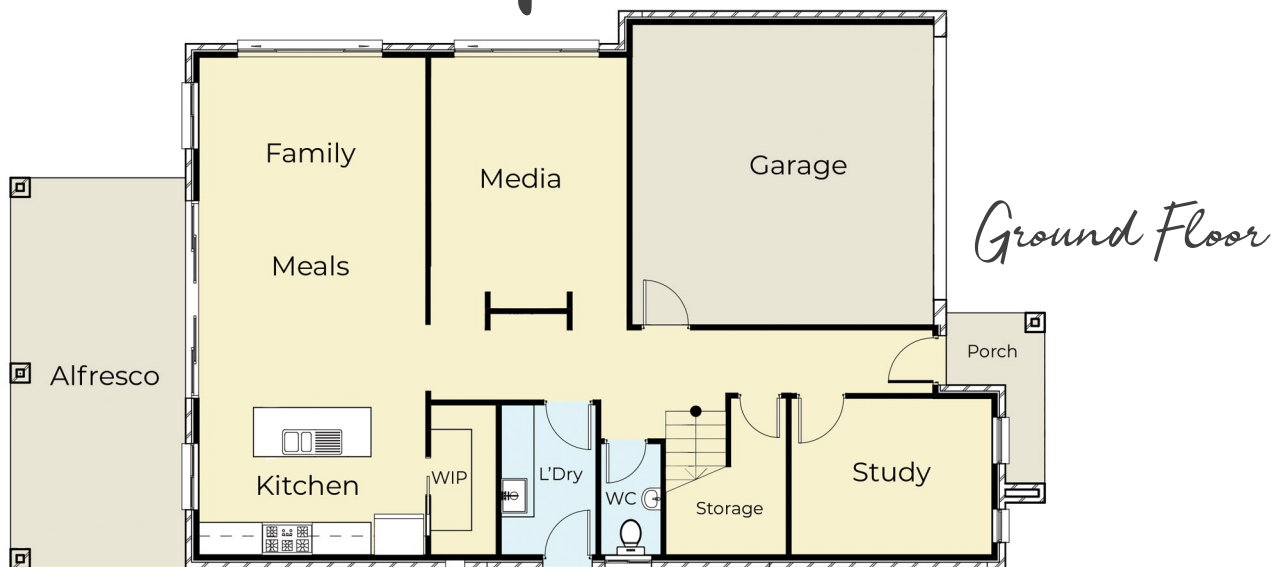
Visit samaro.com.au

Turn over
for floorplan



Like this design? Want to find out more about building a new home? You might be surprised at how simple the process really can be with the right builder. Contact us today for a no obligation chat about how we can help make your dream home a reality.

Floorplan



SCAN to view our inclusions

QR Readers available for free on the App Store (Apple) or Play Store (Android)

Like this design? Want to find out more about building a new home? You might be surprised at how simple the process really can be with the right builder. Contact us today for a no obligation chat about how we can help make your dream home a reality.