

# Kerrigan 18



## SUITABLE FOR 12.5m WIDE BLOCKS

The Kerrigan 18 has been designed to suit 12.5m wide blocks.

This home will be the complete package featuring our 'House to home' inclusions. Quality fixtures & fittings throughout with all the final touches that make a house a home. All you will need to do is move in! We offer FIXED PRICE tenders that include all site costs.

The Kerrigan 18 offers a welcoming, affordable & fuss-free approach to family living. The open plan hub of the home provides a space for the family to connect. Clever storage solutions feature throughout with a generous walk in linen and built in robes to all 3 bedrooms. Both functional and practical, the Kerrigan 18 is simplicity at its best.

- **3 bedrooms with BIR**
- **2 bathrooms with floor to ceiling tiling**
- **Open plan living**
- **Gourmet kitchen with stone benchtops**
- **Walk in pantry**
- **House to home inclusions**

## Get in touch

Aaron Bell | [aaron@samaro.com.au](mailto:aaron@samaro.com.au) | 0431 168 847 | 1300 735 746



Scan QR Code

Follow us on Facebook



Scan QR Code

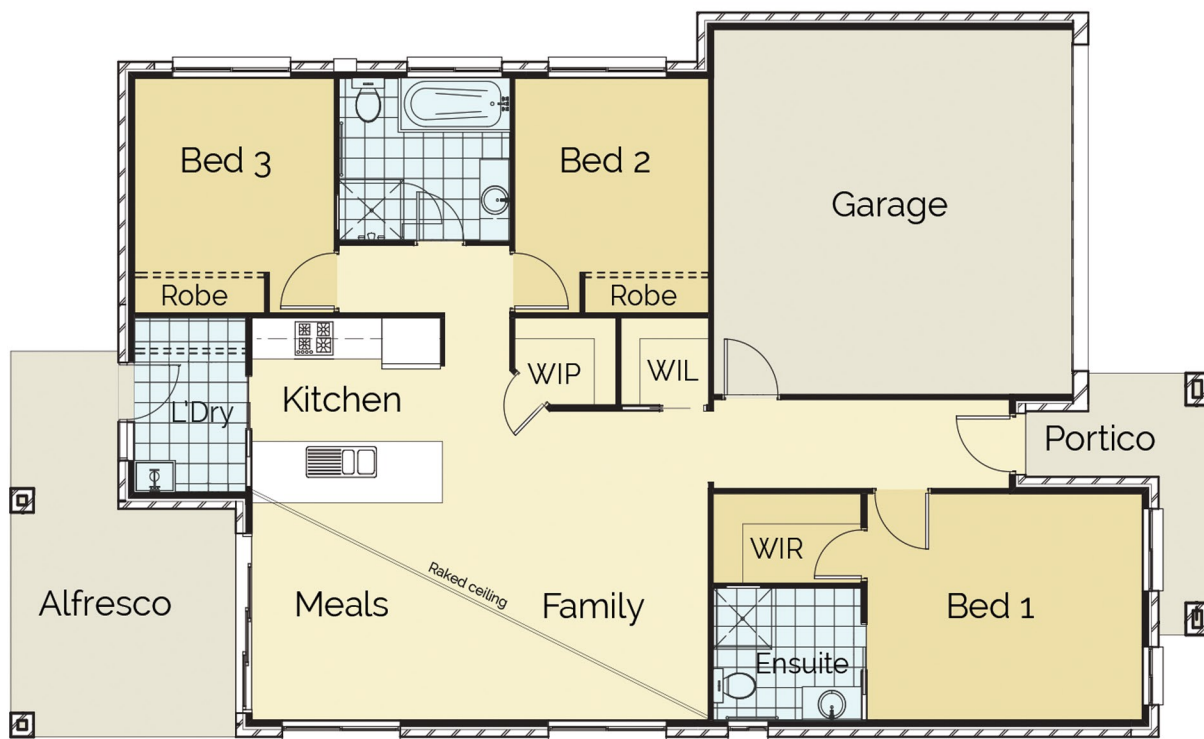
Visit [samaro.com.au](http://samaro.com.au)

Turn over  
for floorplan



*Like this design? Want to find out more about building a new home? You might be surprised at how simple the process really can be with the right builder. Contact us today for a no obligation chat about how we can help make your dream home a reality.*

# Floorplan



SCAN to view our inclusions

QR Readers available for free on the App Store (Apple) or Play Store (Android)

*Like this design? Want to find out more about building a new home? You might be surprised at how simple the process really can be with the right builder. Contact us today for a no obligation chat about how we can help make your dream home a reality.*