

Logan 24



SUITABLE FOR 17.5m WIDE BLOCKS

The Logan 24 has been designed to suit 17.5m wide blocks.

This home will be the complete package featuring our 'House to home' inclusions. Quality fixtures & fittings throughout with all the final touches that make a house a home. All you will need to do is move in! We offer FIXED PRICE tenders that include all site costs.

The Logan 24 features 4 bedrooms with built in robes, 2 bathrooms with floor to ceiling tiling, open plan living. The kitchen, the hub of the home features a large walk in pantry. A separate media room provides the family with a space to relax and unwind.

A beautifully designed floorplan that combines all the elements essential to modern living.

- **4 generous sized bedrooms**
- **2 bathrooms with floor to ceiling tiling**
- **Separate media room**
- **Gourmet kitchen with stone benchtops**
- **Detached double garage**
- **House to home inclusions**

Get in touch

Aaron Bell | aaron@samaro.com.au | 0431 168 847 | 1300 735 746



Scan QR Code

Follow us on Facebook



Scan QR Code

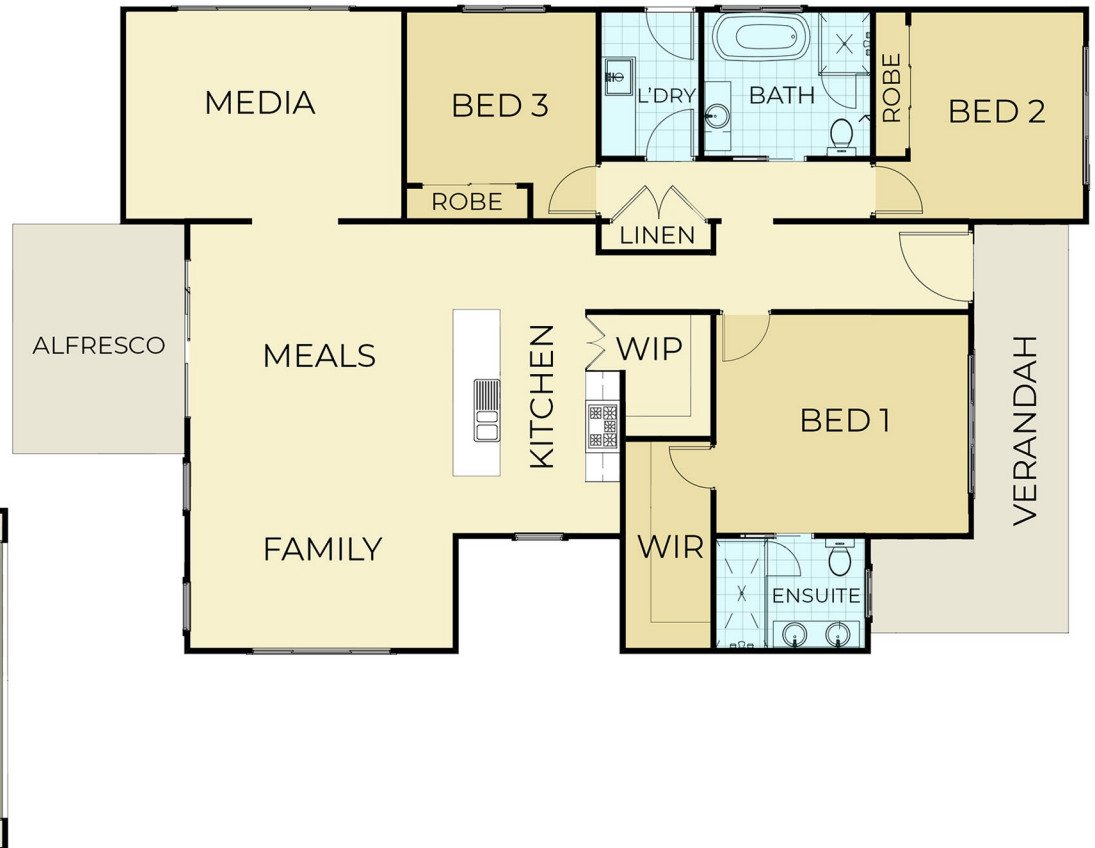
Visit samaro.com.au

Turn over
for floorplan



Like this design? Want to find out more about building a new home? You might be surprised at how simple the process really can be with the right builder. Contact us today for a no obligation chat about how we can help make your dream home a reality.

Floorplan



Scan me



SCAN to view our inclusions

QR Readers available for free on the App Store (Apple) or Play Store (Android)

Like this design? Want to find out more about building a new home? You might be surprised at how simple the process really can be with the right builder. Contact us today for a no obligation chat about how we can help make your dream home a reality.